

The Harbourough

5-bedroom home

An impressive kitchen, breakfast and family area is the focal point of The Harbourough, where you can throw open the French doors and walk out onto your garden and enjoy your own private outdoor space. The equally spacious separate lounge and additional dining room offer even more room for your family to spread out and give you the option to create an idea office space to work from home.

The five bedrooms are arranged across the first and second floors, sharing a family bathroom and a shower room. In the principle bedroom you'll find a little privacy; it's fitted with it's own en-suite shower room and two built-in wardrobes.



All drawings, plans, and images are for illustrative purposes only. Room measurements are approximate. Finishes and layouts may vary and, during the construction process, plans might be subject to change. For more information, speak to your sales consultant.

Features

- Open plan kitchen, breakfast, and family area with bay windows
- Cloakroom, family bathroom, shower room, and principle bedroom en suite
- Spacious separate lounge and additional dining/study room
- High quality Smeg kitchen appliances
- Private turfed garden reached through French doors
- Built-in wardrobes
- HIVE smart home system

Room Dimensions

Ground Floor

Family/Kitchen

Arrow A	4063mm	13'3"
Arrow B	3050mm	10'0"
Arrow C	4973mm	16'3"
Arrow D	9473mm	31'0"

Lounge	3568mm x 5035mm	11'8" x 16'6"
Dining Room	3455mm x 3172mm	11'4" x 10'4"
Utility	2382mm x 1770mm	7'9" x 5'9"
Cloaks	967mm x 1770mm	3'2" x 5'9"

First Floor

Bedroom 1

Arrow A	6267mm	20'6"
Arrow B	2497mm	8'2"
Arrow C	3568mm	11'8"
Arrow D	2925mm	9'7"
Wardrobe	550mm x 3677mm	1'9" x 12'0"
En-suite	2698mm x 1875mm	8'10" x 6'1"

Bedroom 2	3455mm x 3438mm	11'4" x 11'3"
Wardrobe	550mm x 2687mm	1'9" x 8'9"

Bedroom 3	3455mm x 3418mm	11'4" x 11'2"
Wardrobe	550mm x 2687mm	1'9" x 8'9"

Bathroom	3077mm x 1875mm	10'1" x 6'1"
----------	-----------------	--------------

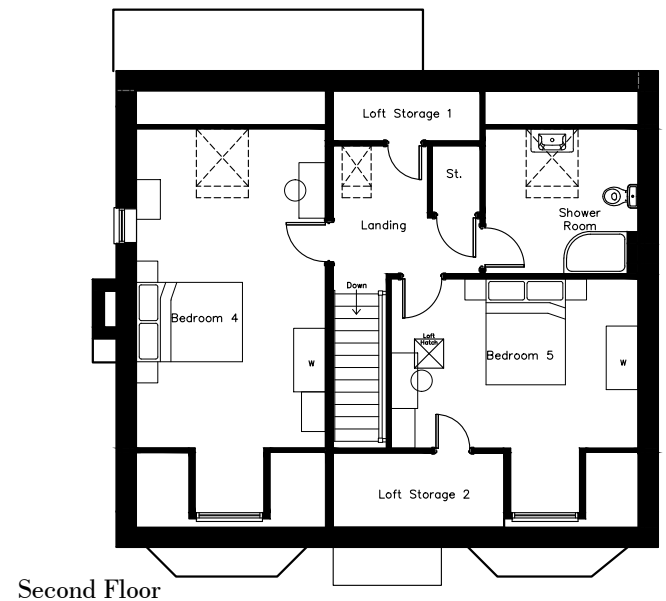
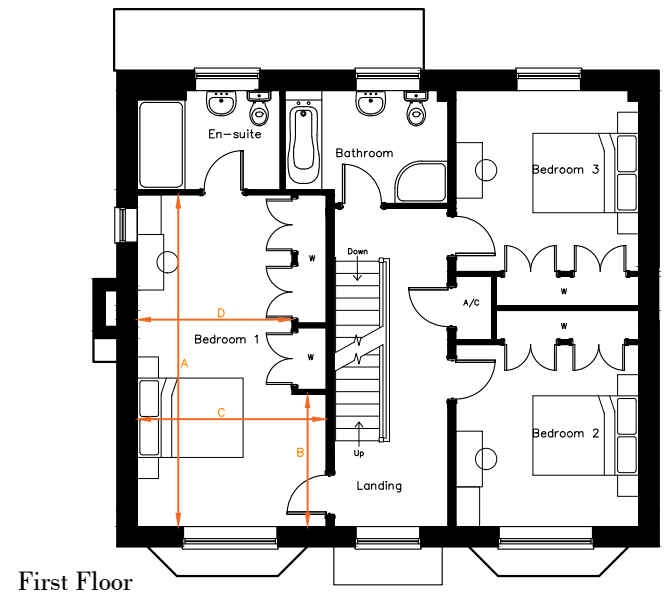
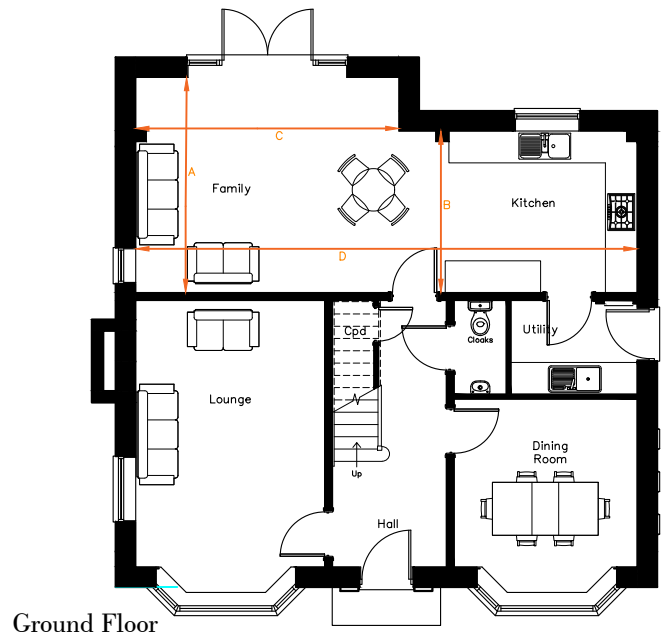
Second Floor

Bedroom 4	3568mm x 7251(max) 6033(min)	11'8" x 23'9" 19'9"
-----------	---------------------------------	------------------------

Bedroom 5	4662mm x 4418mm 3200(min)	15'3" x 14'5" 10'5"
-----------	------------------------------	------------------------

Shower Room	2890mm x 2740mm	9'5" x 8'11"
-------------	-----------------	--------------

Loft Storage 1	2772mm x 940mm	9'1" x 3'1"
Loft Storage 2	3220mm x 1395mm	10'6" x 4'6"



All drawings, plans, and images are for illustrative purposes only. Room measurements are approximate. Finishes and layouts may vary and, during the construction process, plans might be subject to change. For more information, speak to your sales consultant.