

The Lavant

2-bedroom home

As you step through the front door of The Lavant and enter the hall, to your left you'll find a generously sized lounge that opens into a modern kitchen, living and dining area with cloakroom. Upstairs the principal bedroom features a built-in wardrobe, and a bathroom with over bath shower is shared between the two bedrooms. With bedrooms at the front and back of the house, you can decide whether yours looks out over the neighbourhood or the beautifully landscaped garden.



Features

- Open plan kitchen, living and dining area looking out onto rear garden
- Cloakroom and family bathroom
- Landscaped garden reached through French doors
- Stainless steel integrated single oven, hob and extractor fan
- Built-in wardrobes in principal bedroom

Room Dimensions

Ground Floor

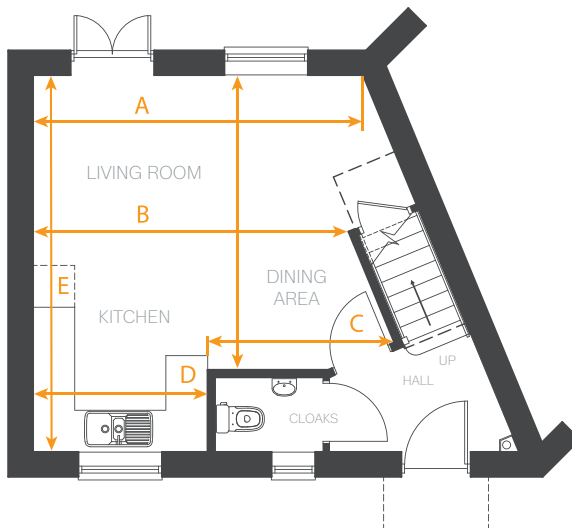
LIVING / DINING / KITCHEN

ARROW A	4680 mm	15'4"
ARROW B	4472 mm	14'8"
ARROW C	2624 mm	8'7"
ARROW D	2455 mm	8'0"
ARROW E	5350 mm	17'6"
ARROW F	4175 mm	13'8"
CLOAKROOM	1520 x 1025 (max) mm	5'0" x 3'4"

First Floor

BEDROOM 1	3367(min) x 2522(max) mm	11'0" x 8'3"
BEDROOM 2	3254 x 2725 mm	10'8" x 8'11"
BATHROOM		
ARROW G	1537 mm	5'0"
ARROW H	2621 mm	8'7"

Ground Floor



First Floor

