

The Alcester

2-bedroom home

As you step through the front door of The Alcester and enter the hallway, you'll find a generously-sized lounge leading off it. This opens into a modern kitchen and dining area which benefits from views of the rear garden, creating a lovely light and bright space whether you're cooking or hosting a dinner party.

Upstairs on the first floor, two bedrooms share the contemporary bathroom with bathtub and feature built-in wardrobes with plenty of handy storage space. Along with the downstairs cloakroom, and this attractive home has everything couples and first-time buyers will need.



All drawings, plans, and images are for illustrative purposes only. Room measurements are approximate. Finishes and layouts may vary and, during the construction process, plans might be subject to change. For more information, speak to your sales consultant.

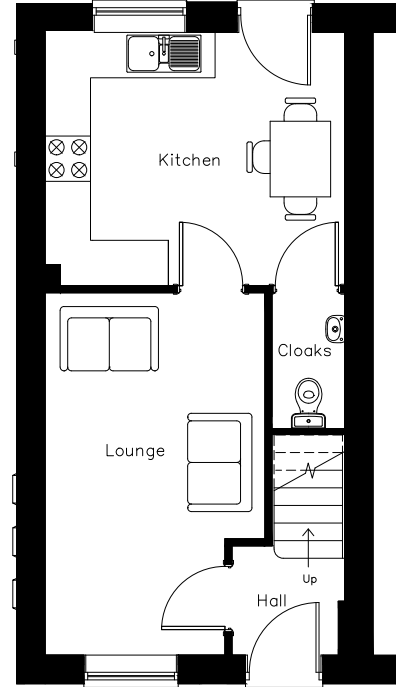
Features

- Open-plan kitchen and dining area looking out onto rear garden
- Separate lounge
- Cloakroom and family bathroom
- Private garden
- High quality Smeg kitchen appliances
- Built-in wardrobes
- HIVE smart home system

Room Dimensions

Ground Floor

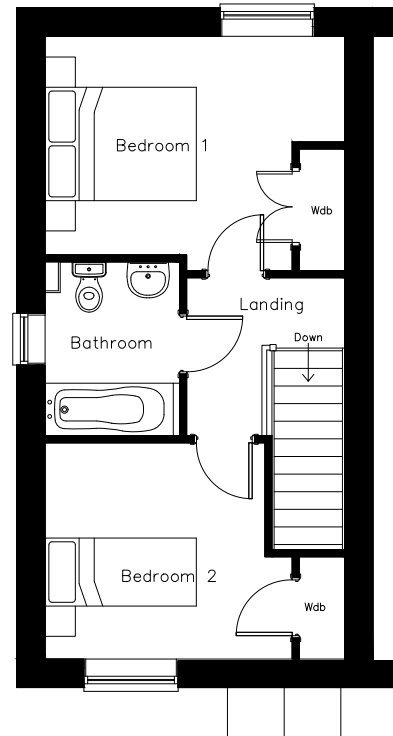
Lounge/Dining	2907(max) x 4792mm 2378(min)	9'6" x 15'8" 7'9"
Kitchen	3960mm x 3350mm	12'11" x 10'11"
Cloakroom	960mm x 1640mm	3'1" x 5'4"



Ground Floor

First Floor

Bedroom 1	3960mm x 2890mm	12'11" x 9'5"
Bedroom 2	3267mm x 2859mm	10'8" x 9'4"
Bathroom	1779mm x 2300mm	5'10" x 7'6"



First Floor

All drawings, plans, and images are for illustrative purposes only. Room measurements are approximate. Finishes and layouts may vary and, during the construction process, plans might be subject to change. For more information, speak to your sales consultant.