

The Solent

4-bedroom detached home

Family living made simple. The Solent is a contemporary home with a traditional exterior and practical layout. The utility room, hall and cloakroom make up the ground floor with the combined kitchen and family dining area and separate lounge. The latter has French doors which open out to a beautiful private garden, ideal for all those times when you want to bring the fresh air into your home or enjoy some outside space.

Upstairs three bedrooms share a family bathroom with bathtub, while the large principle bedroom benefits from its own en-suite shower and built-in wardrobe. With four well-proportioned bedrooms in total, you might prefer to turn one of them into the private home office you've always wanted.



Features

- Open-plan kitchen and dining area
- Separate spacious lounge looking out onto rear garden
- Cloakroom, family bathroom with bathtub, and principle bedroom en-suite shower
- Private garden reached through French doors
- High quality Smeg kitchen appliances
- Built-in wardrobes in three rooms
- HIVE smart home system
- Garage

Room Dimensions

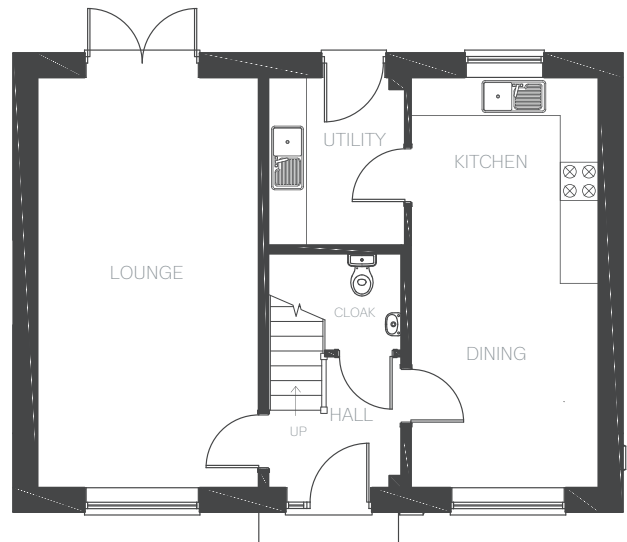
Ground Floor

LOUNGE	3470 x 6435 mm	11'4" x 21'1"
KITCHEN/DINING	2942 x 6435 mm	9'7" x 21'1"
UTILITY	2143 x 2633 mm	7'0" x 8'7"
CLOAKROOM	2086 x 1520mm	6'10" x 4'11"

First Floor

BEDROOM 1	3517 x 3879 mm	11'6" x 12'8"
EN-SUITE	2082 x 2231 mm	6'9" x 7'3"
BEDROOM 2	2989 x 3236 mm	9'9" x 10'7"
BEDROOM 3	2989 x 2463 mm	9'9" x 8'0"
BEDROOM 4	2519 x 2463 mm	8'3" x 8'0"
BATHROOM	3080 x 1448 mm	10'1" x 4'9"

Ground Floor



First Floor

