

The Severn

4-bedroom detached home

With a front porch and glazed pod to the rear, The Severn has an impressive exterior.

Step inside to find a generous entrance hall, spacious lounge, study, downstairs cloakroom and open-plan kitchen, dining and family area, with the added benefit of a separate utility room. The contemporary kitchen space features French doors that open onto a private rear garden creating a bright and beautiful area for the whole family to enjoy. While the private study provides a welcome hideaway when you need to work from home. Upstairs the three bedrooms share a family bathroom with bathtub, while the principle bedroom has an en-suite shower room.



Features

- Open-plan kitchen, dining and family area looking out onto rear garden
- Spacious lounge
- Separate utility room
- Cloakroom, family bathroom with bathtub, and principle en-suite shower
- Private garden reached through French doors
- High quality Smeg kitchen appliances
- HIVE smart home system
- Garage

Room Dimensions

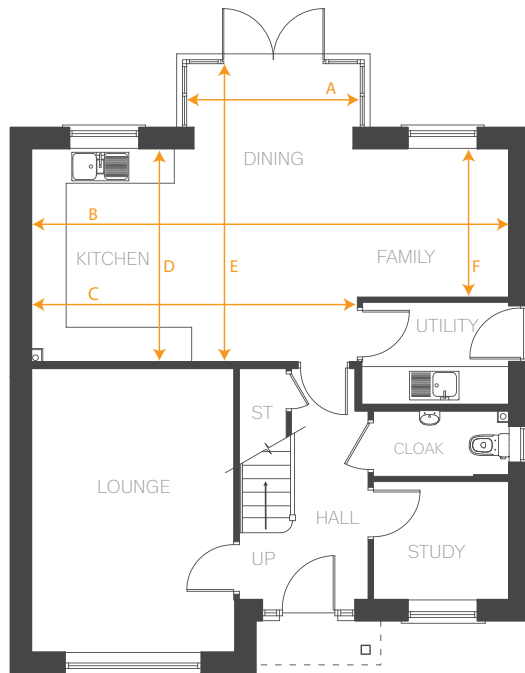
Ground Floor

LOUNGE	4830 x 3445 mm	15'10" x 11'3"
STUDY	2297 x 2000 mm	7'6" x 6'6"
KITCHEN/DINING/ FAMILY		
ARROW A	2970 mm	9'8"
ARROW B	8150 mm	26'8"
ARROW C	5565 mm	18'3"
ARROW D	3620 mm	11'10"
ARROW E	5089 mm	16'8"
ARROW F	2522 mm	8'3"
UTILITY	2482 x 1727 mm	8'1" x 5'8"
CLOAKROOM	2297 x 1095 mm	7'6" x 3'7"

First Floor

BEDROOM 1	3840 x 3445 mm	12'7" x 11'3"
EN-SUITE	2270 x 1490 mm	7'5" x 4'10"
BEDROOM 2	3445 x 3064 mm	11'3" x 10'0"
BEDROOM 3	3959 x 2120 mm	12'11" x 6'11"
BEDROOM 4	2928 x 2563 mm	9'7" x 8'4"
BATHROOM	2563 x 2446 mm	8'4" x 8'0"

Ground Floor



First Floor

