

The Dove

3-bedroom home

A short path and classic porch welcome you into The Dove, a traditional-looking home designed for contemporary living. The open-plan kitchen and dining area, a separate lounge and a cloakroom make up the ground floor, while upstairs the spacious bedrooms ensure the upper floor feels bright and airy.



Features

- Open plan kitchen and dining area looking out on rear garden
- Cloakroom, family bathroom, and en-suite shower room
- Landscaped garden reached through French doors
- Spacious separate lounge
- Stainless steel integrated oven, 4-ring hob and chimney hood extractor fan
- Built-in wardrobe in master bedroom
- Single garage

Room Dimensions

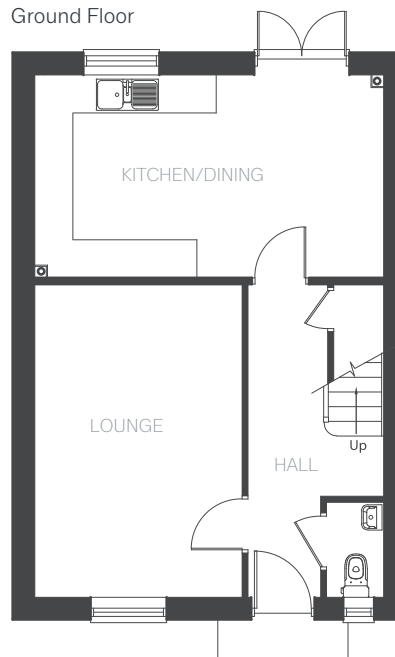
Ground Floor

LOUNGE	4890 x 3238 mm	16'0" x 10'7"
KITCHEN / DINING	5450 x 3150 mm	17'10" x 10'4"
CLOAKROOM	1470 x 870 mm	4'9" x 2'10"

First Floor

BEDROOM 1	3804(max) x 2872 mm	12'5" x 9'5"
EN-SUITE	2731 x 1030 mm	8'11" x 3'4"
BEDROOM 2	3150 x 2937 mm	10'4" x 9'7"
BEDROOM 3	2599 x 2475 mm	8'6" x 8'1"
BATHROOM	2410 x 1870 mm	7'10" x 6'1"

Ground Floor



First Floor

